

mica messenger

MIDWEST INSULATION CONTRACTORS ASSOCIATION

16712 ELM CIRCLE

OMAHA, NEBRASKA 68130



**VOLUME 56 NO. 02
FEBRUARY 2022**



WHAT'S INSIDE THIS MONTH:

- 65th Annual Spring Convention.
- President's Message.
- U.S. Department of Labor Announces Proposed Rule to Update Powered Industrial Trucks Standard for General Industry, Construction.
- Construction Employment Dips in January Despite Record Rise in Wages.
- Materials Prices Soar 20 Percent Between January 2021 and January 2022.
- MICA Future Meeting Dates.
- ABC: Construction Industry Faces Workforce Shortage of 650,000 in 2022.
- Construction Coalition Opposes Biden Administration Project Labor Agreement Schemes.
- Dodge Momentum Index Falls in January.
- ABC's Construction Backlog Slips Again in January.
- Senate Democrats' Proposal to Suspend the Federal Gas Tax Will Not Lower Prices but Will Make it Harder to Fix Roads and Bridges.

65th ANNUAL SPRING CONVENTION

President Rudy Nigl and his wife, Courtney, wish to extend a warm MICA invitation to you to join them as our association engages in "Here and Now". One of the key benefits of belonging to MICA is your ability to work with fellow members "Here and Now" to improve your business acumen and to better your industry. Come and participate as we share ideas at our annual convention this June 19 – 22, 2022, at the Hyatt Regency Coconut Point Resort, in Bonita Springs, Florida. Our 65th Annual Spring Convention will be a special event, and one that you do not want to miss! The timing and location of this year's meeting is designed to allow those of you who would like to extend the meeting into a vacation time for the entire family to do so. The Fort Myers/Naples area, coupled with the west coast of Florida, is ideal for a family getaway starting with the luxurious Hyatt Regency. Create memories that will last a lifetime at this

award-winning tropical resort. Enjoy exclusive access to five water slides, four refreshing pools, a lazy river, and a secluded private island. From family retreats to romantic escapes, this Southwest Florida resort in Bonita Springs offers endless excitement in a beautiful setting. Explore the beauty and culture that surrounds the resort. Discover the many local art galleries, museums, shops, restaurants, and entertainment venues found minutes from the property. Take your adventure to the water with chartered fishing trips and excursions through the Everglades. Children and adults alike will find plenty of activities to keep them busy during the free time. This is one of those unique experiences that you should not miss. Begin now to plan your participation at our 65th annual spring convention.

The Board of Directors is most excited about the technical topics and speakers for the spring convention. The topics and speakers were selected to help educate and inform you on a variety of industry topics pertinent to our current business climate. We are going to have presentations that cover a wide array of topics that will help you grow your knowledge as a business professional. Our opening keynote speaker is Andre Fluellen. Andre is a Co-Founder of Beyond The Game Network. He played eight years in the NFL as a defensive tackle for the Lions, Bills, and Dolphins. Fluellen is a graduate of the NFL's Broadcaster Bootcamp and has appeared as a football analyst on the NFL Network. He is an active motivational speaker, addressing thousands across the country annually. In keeping with President Nigl's theme, Andre will share with us "The Power of Right Now".



The national news has alerted us to the fact that across the world, there are supply chain issues. From food shortages in our grocery stores to computer chips for new cars, and for sure, sourcing supplies for our industry's basic material needs is proving more difficult than many of us have ever experienced. From a contractor perspective, how do you price your insulation material needs when the quoted price from distributors keeps changing almost on a daily basis, and the delivery time cannot be guaranteed? From a distributor perspective, how can

(Continued on page 5)

PLACE YOUR BUSINESS CARD AD HERE

Affordable Yearly Rate

Contact the MICA Office for Details



allied insulation supply

Primary Insulation Distributor

Accessories	Facings	Metal Fittings & Jacket
Adhesives & Mastics	Fiberglass Batt & Board	Mineral Wool Batt & Board
Calcium Silicate	Fiberglass Pipe Insulation	Pipe & Tank
Custom Fabrication	Fire Stop Materials	Polystyrene Board
Duct Wrap/Board	ISO Board	PVC Fittings & Jacket
EIFS	Metal Building Insulation	Sealants

800-242-9970

milwaukee • davenport • omaha • wausau

"If it's insulation we stock it!"
www.alliedinsulation.com

PLACE YOUR BUSINESS CARD AD HERE

Affordable Yearly Rate

Contact the MICA Office for Details



VIMASCO CORPORATION

SERVING THE INDUSTRY SINCE 1955

- Adhesives
- Mastic—Fire Protective Coatings
- Nuclear Grade Adhesives and Coatings for Power Plants and the Military
- Cable Coating
- Chinking & Caulking

Highest Quality - Superior Customer Service - On Time Delivery

CALL ANGELA TODAY P.O. BOX 516, NITRO WV 25143

PHONE (800) 626-8288 * FAX (304) 755-7153

Or Contact
www.Jeff-Co.com
317-459-4030

WWW.VIMASCO.COM

Highest Quality - Superior Customer Service - On Time Delivery



**SSL II® WITH ASJ MAX
FIBERGLAS™ PIPE INSULATION**



Contact Your Midwest Regional Sales Team:

Bryan Bergquist
MN, ND, SD, West WI • 763-567-1773
Bryan.Bergquist@owenscorning.com

Jacob Aelker
NE, OK, KS, AR, MO, West IA • 419-906-0062
Jacob.Aelker@owenscorning.com

Tom McGettigan
IL, IN, East IA, East WI • 317-790-9265
Tom.McGettigan@owenscorning.com

Jan Mierzwik
OH, KY, MI, WV, West PA • 630-854-7360
Jan.Mierzwik@owenscorning.com



Learn more at www.owenscorning.com/mechanical

THE PINK PANTHER™ & © 1964-2021 MGM. The color PINK is a registered trademark of Owens Corning. © 2021 Owens Corning. All Rights Reserved.

Quality Insulation Fabrics and More ...



ALPHA
engineered composites

145 Lehigh Ave, Lakewood, NJ 08701

800-631-5399 732-634-5700 www.alphainc.com

PLACE YOUR BUSINESS CARD AD HERE

Affordable Yearly Rate

Contact the MICA Office for Details

M.W. OTTINGER SALES

Manufacturers' Representative

Minneapolis, MN - Serving the Upper Midwest

Phone: 763-559-0253

Contacts: Miles Ottinger, mwottinger@gmail.com

Mitch Ottinger, mitch.ottinger@gmail.com

Website: www.mwottingersales.com



Representing:

★ **AMERICAN SEALANTS, INC. (ASI)**
Silicone Sealants

★ **INSPECTION POINT SEALS**
Inspection Plugs for Valves and Piping

★ **INSULATION COMPONENTS**
iShields, Insulated iShields, iBlocks, iTools

★ **METAL TEXTILES CORP.**
Knitted Wire Mesh

★ **MID-MOUNTAIN MATERIALS**
Woven Textiles, Coated Fabrics, Welding Cloth



PRESIDENT'S MESSAGE

TO: THE MICA MEMBERSHIP

Greetings MICA Family!

Resilience (def.)

1. The capacity to recover quickly from difficulties; toughness.
2. The ability of a substance or object to spring back into shape; elasticity.

Resilience is a characteristic trait that we see from the most successful leaders, the humblest employees, the ever-giving parents, and even our children!

I was listening to a podcast recently while on the road between jobsites, and the person being interviewed was a man named Joe De Sena. The creator of the famous “Spartan Race” has been pushing the extreme for a few decades now. Years ago, De Sena found himself on Wall Street and began searching for physical and mental challenges to push himself past the everyday routine and boredom that he found himself falling into.

The Spartan Race is a collection of obstacle course races around the world with varying distances and difficulties. They are a true test of the individual’s grit, toughness, and resilience. De Sena and his team have been organizing these events for the last 15 years and have seen hundreds of thousands of “everyday people” push themselves past what they ever thought they were capable of. De Sena has taken his findings from the “Resilience” world to help others by writing books and traveling to speak on the importance of resilience as an individual as well as a family. His latest book speaks to the topic of family resilience – how do we as adults/parents work through tough situations, or bounce back from something

negative in our lives. As important as our own resilience is, the ways we are leading our children through resilience can be even more meaningful. Children are facing challenges in all aspects of their lives, and the people they look up to are the ones that can help guide them to become more resilient.

De Sena speaks to the immense number of children in our country that are losing the ability to “bounce back” from a situation, or how to deal through a hardship. Too many children are assisted by a parent, friend, coach, mentor anytime something goes wrong. Now, De Sena doesn’t encourage leaving your child to handle all situations by themselves, but instead, to help them learn from challenging experiences to better themselves. The path to resilience isn’t easy, but can build mental, physical, and spiritual strength that will lead to more personal growth and success as the world comes at us in the future.

Speaking from experience – with three children under 7 years old right now – there are plenty of opportunities to “just do it for them” or to “fix the problem”. Courtney and I try to be aware of these situations and allow our children to learn and experience as much as possible so they can learn and find those paths through challenges, excitement, and responsibilities. It’s never perfect, and never will be – but it is a true joy to see a child bounce back from a challenge and become a little stronger from it.

As adults, we need to show our children and others around us the path to resilience – and the only way to do that is to face it ourselves and push past the comfort zone to better ourselves and those in our lives.

I hope you all can enjoy the last stretch of winter like we are in this photo of a recent dog-sledding adventure in Montana. Spring will be here soon – so get the dust off those golf clubs and bikes to get outside soon for spring-time fun!

Rudy Nigl
MICA President

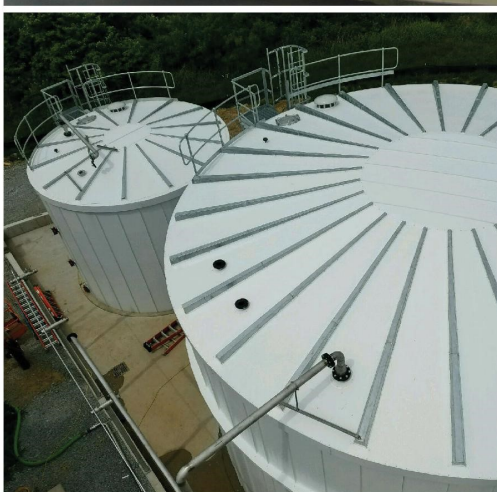


A Product of MC&I



TANK INSULATION PANELS

MCI-RIDGLOK.com



- Labor Savings
- Small Crew Size
- Minimal to NO Welding
- Minimal Specialty Tools
- No Scaffolding
- Pre-Fabricated Panel
- High Wind Designs
- Longest Lifespan
- Easy Repairs
- Minimum Maintenance
- Freeze Protection
- Strong Weather Barrier



ALL INDUSTRIES—ALL TANKS

Heated/Cold • Large/Small | Welded • Bolted • Concrete • Plastic



Manufacturer of the patented IPS Inspection Port, the cost effective way to access piping and vessels when performing CUI inspections.

Features and Benefits:

- Watertight Seal without Screws, O-Rings or Caulk
- Installs Easily without Special Tools
- Reduces Installation Time



SILICONE
-130°F to +500°F
+1000°F*

* Maximum temperature is achieved with our ThermoDisc Insulation properly installed.

MODEL 206
For cal-sil, foam glass or perlite insulation.
Also PVC jacket.

MODEL 95
U. S. Patent #6082576

1-888-236-0408
39421 Highway 929, Prairieville, LA 70769
Ph. (225) 622-6183
Fax. (225) 622-6787

www.ipseals.com

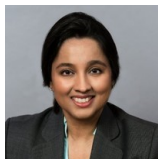
" Please see our website for complete product listings and specifications "

(Continued from page 1)

you support your contractor customers with a firm price and delivery date, when your manufacturer/supplier keeps changing the price almost daily with no firm delivery date? From a manufacturer perspective, how can you support your distributor/contractor customers when the raw materials needed to manufacture your insulation products is waiting a half-world away to be delivered, with no guaranteed delivery date forthcoming?

Collectively, these supply chain issues make the jobs of member companies considerably harder. Coming out of 2021 and into 2022, our industry has been playing catch-up. Projects are delayed and these backlogged projects continue to fill our calendars. Our industry and the entire world are trying to navigate these shortages of even the most basic materials.

To get a better perspective on this entire supply chain issue, we will have a presentation by **Shraddha Gupta**. Shraddha is the

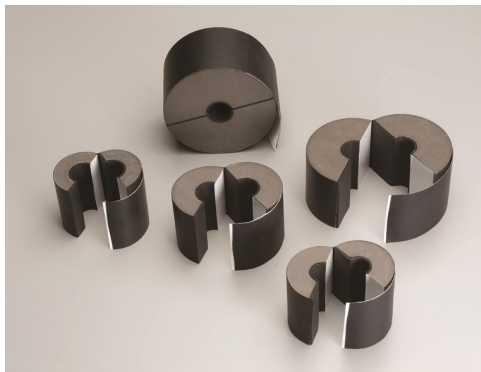


Global Supply Chain Leader for Owens Corning. She has been with the company for over 4 years. During her time with OC, Shraddha has directed the integration of a global supply chain business in North America and Europe, following the procurement of Foamglas into the Owens Corning culture. To facilitate the integration success, she crafted an impactful sales and operations planning (S&OP) process. Shraddha was part of the OC team that delivered a 40% reduction in warehouse capacity management waste after revamping an insulation plant's "order to cash (O2C)" process.

We have reserved a block of rooms at the resort. Our convention rate is \$219 per night plus tax, single or double occupancy for run of the house rooms. The resort fee is discounted to \$5.00 per day. **It is highly suggested that you book your hotel reservations now!** Call the reservations office at 877-803-7534 and ask for the **Midwest Insulation Contractors Block**. If you prefer, you may use the reservations link at <https://www.hyatt.com/en-US/group-booking/NAPRN/G-FMIC>. Please note that we have blocked a limited number of rooms. If you wait until the last minute to reserve your room, you run the risk that our block will be filled. Once the block is filled, the discounted rate will not be available. As we have stated in the past, if you reserve your hotel room now, you can always cancel it later, but you may not be able to reserve a room if you wait too long. We will be monitoring our block and making room adjustments accordingly. **Our block of rooms will be released on May 27, 2022**, but if you wait until May 27th, the block of rooms will be filled, and we may not be able to accommodate your needs.

The Board of Directors feels that each presentation will add value to your understanding of the technical topics discussed. You will come away from the convention more informed and better prepared to successfully manage your business. It is the Board's intent to make this convention attractive to our membership in its location, cost and program content. In this light, our registration fee has been adjusted to encourage additional member participation. The registration fee is \$800.00 for the first attendee from a member company. Registration for all additional attendees from a given company is reduced to \$775. The registration fee is \$1,550.00 for the first member and

(Continued on page 7)



Aerofix®

Insulated Pipe Supports

HVAC | Refrigeration | VRF | Chilled Water
Hot and Cold-Water Piping



282 Industrial Park Road Sweetwater, TN 37874
423.337.2493 Fax: 423.337.7675 Toll Free: 866.AEROCEL

www.aeroflexusa.com

Aerofix® patented insulated pipe supports are high-strength, load-bearing, closed-cell insulation fittings. Will not compress or crush under loads imposed by active piping systems at pipe hanger and strut clamp locations. Composed of rigid closed-cell, lightweight, polymeric foam and lined with closed-cell EPDM rubber. Aerofix is encased in a zero-perm, weather-proof, corrosion-proof EPDM polymer membrane with a high-performance pressure-sensitive closure system.

Hermetically seals piping against vapor drive. Prevents thermal bridging and the potential for corrosion under insulation (CUI) when installed with Aerocel® EPDM closed-cell elastomeric pipe insulation, adhesives and zero-perm Protape®.

LEED-Contributing: GREENGUARD Gold Certified, Environmental Product Declaration (EPD) and Health Product Declaration (HPD).

Wide range of ID's (1/4" - 12" IPS) and thicknesses (1/2" - 2").



Industry leading customer service

• Quickest turn around time

• White indoor/outdoor UVR

• E-84 low smoke approved

• No up charge for color

• 18 Colors

PIC Plastics, Inc
2232 North Garrison Ave
Carthage, MO 64836



P.I.C.
PLASTICS

phone 800-654-0409 • fax 417-359-9899 www.pic-plastics.com

FABRICATED PRODUCTS

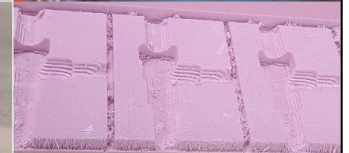
- ISO 2, 3, 4, 6, HT & 25-50
- Extruded Polystyrene
- Foamglas®
- Foamular
- Phenolic

PREFORMED HEADS

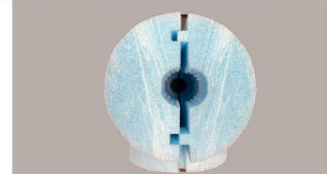
- 2:1 Elliptical Head-FlatHead
- Conical Head
- Hemispherical Head

SPECIALTY VALVES

- Tongue & Groove for Tight Seal



3327 Roanoke Road Kansas City, MO 64111
816-756-2000 www.bradcoinc.net



(Continued from page 5)

spouse registered from a member company. Registration for all additional registered couples from a given company is reduced to \$1,500.00. The Board is delighted to offer this incentive for multiple attendees from member companies. The benefit of joining an association comes from participating in association activities.

A complete packet of registration information including the convention registration form and golf registration will be mailed to you in early March. But do not wait, now is the time to plan for your participation at MICA's 65th annual spring convention. Make your hotel reservations **today** by calling the resort's **reservation line 877-803-7534**. Please join Rudy, Courtney, the entire Board of Directors and fellow MICA members in Bonita Springs, FL, June 19 – 22, 2022, for our annual spring convention and be a part of "Here and Now".

U.S. DEPARTMENT OF LABOR ANNOUNCES PROPOSED RULE TO UPDATE POWERED INDUSTRIAL TRUCKS STANDARD FOR GENERAL INDUSTRY, CONSTRUCTION

WASHINGTON – The U.S. Department of Labor announced today a Notice of Proposed Rulemaking by the department's Occupational Safety and Health Administration to improve worker safety and health by ensuring the agency's general industry and construction industry rules reflect current industry practice and state-of-the-art technology.

The proposed rule will update the design and construction requirements for OSHA's powered industrial trucks standards for general industry and construction, including fork trucks, tractors, platform lift trucks, motorized hand trucks and other specialized industrial trucks powered by an electric motor or an internal combustion engine.

Under the proposed rule, OSHA will update its general industry and construction standards for powered industrial trucks by adding references to the latest design and construction requirements published by the American National Standards Institute in conjunction with the Industrial Truck Standards Development Foundation.

The first standard for powered industrial trucks took effect in 1971, based on industry consensus standards in 1969. Since then, national consensus standards have been updated several times.

In addition to updating the design and construction requirements for future manufactured powered industrial trucks, the proposed rule will also address equipment manufactured before the effective date of the final rule.

This proposal is part of a series of regulatory projects by OSHA to update nearly 200 consensus and industry standards to reflect the current versions of consensus and national industry standards.

Submit comments online, identified by Docket No. OSHA-2020-0008 at the Federal eRulemaking Portal. Read the Federal Register notice for submission instructions. Deadline for submitting comments is May 17, 2022.

SAFETY — PROFITABILITY — PROTECTION

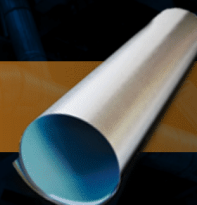
Providing products to help reduce **SAFETY** risks,
increase **PRODUCTIVITY**, and
provide superior **PROTECTION**.



THERMALJACS 547®



WEATHERJACS®



SAFETYJACS®

Safer. Smarter. Faster.

To learn more about our products visit IDEALPRODUCTS.CA



IDEAL PRODUCTS



**Bay
Insulation
Supply**

Member of the Bay Family of Companies

SERVICE FROM 29 LOCATIONS

800 West Fairmont Drive, Suite 2
Tempe, AZ 85282
480-967-1881

3133 S. Dodge Blvd.
Tucson, AZ 85713
520-777-0303

18825 Railroad Street
City of Industry, CA 91748
626-626-2700

130 Mason Circle, Suite B
Concord, CA 94520
925-691-9880

3008 Orange Grove Avenue
North Highlands, CA 95660
916-978-9071

7328 Trade Street, Suite 200
San Diego, CA 92121
858-530-0414

14200 East 33rd Place
Aurora, CO 80011
303-371-0505

2802 Independence Road, Suite F
Iowa City, IA 52240
319-248-7602

5810 East Avenue
Countryside, IL 60525
708-352-9663

3530 Developers Road
Indianapolis, IN 46227
317-782-1144

108 Westhampton Drive
Lexington, KY 40511
859-254-0399

6095 East River Road
Fridley, MN 55432
763-502-9977

5201 E. Front Street
Kansas City, MO 64120
816-920-5900

1170 Central Industrial Drive
St. Louis, MO 63110
314-776-2002

3555 Ponderosa Way, Unit E
Las Vegas, NV 89118
702-891-5333

2630 Glendale Milford Rd
Cincinnati, OH 45241
513-563-8200

4755 West 150th Street, Suite E
Cleveland, OH 44135
216-362-7338

2245 Westbelt Drive
Columbus, OH 43228
614-345-0804

3223 NW Guam Street
Portland, OR 97210
503-248-9662

5043 Martin Luther King Jr. Freeway
Fort Worth, TX 76119
817-617-4383

2745 Market Street, Suite 100
Garland, TX 75041
972-278-4900

4411B Darien Street
Houston, TX 77028
713-675-1811

2701 Gattis School Road, Suite 110E
Round Rock, TX 78664
512-582-0929

8559 NE Loop 410, Suite 132
San Antonio, TX 78219
210-610-9950

21840 76th Avenue South
Kent, WA 98032
425-251-6750

308 Chenoweth Street
Mount Vernon, WA 98273
360-399-6627

1017 North Bradley Road, Suite B
Spokane Valley, WA 99212
509-893-3411

2929 Walker Drive
Green Bay, WI 54311
920-406-4100

823 South 60th Street,
Suite R1
Milwaukee, WI 53214
414-258-9333

www.bayinsulationsupply.com

CONSTRUCTION EMPLOYMENT DIPS IN JANUARY DESPITE RECORD RISE IN WAGES, FALLING UNEMPLOYMENT AS QUEST FOR WORKERS INTENSIFIES AMONG INDUSTRIES

Contractors Association Prepares Updated Construction Inflation Alert as Tight Labor Market, Soaring Materials Costs, and Supply Chain Disruptions Threaten to Delay Projects and Undercut Further Job Gains

Construction employment dipped by 5,000 jobs between December and January even though hourly pay rose at a record pace in the past year, according to an analysis by the Associated General Contractors of America of government data released today. Association officials said future job gains are at risk from several factors that are slowing projects, as detailed in the *Construction Inflation Alert* that it will post on February 7.

“Contractors are struggling to fill positions as potential workers opt out of the labor market or choose other industries,” said Ken Simonson, the association’s chief economist. “In addition, soaring materials costs and unpredictable delivery times are delaying projects and holding back employment gains.”

Simonson noted that average hourly earnings in the construction industry increased 5.1 percent from January 2021 to last month--the steepest 12-month increase in the 15-year history of the series. The industry average of \$33.80 per hour exceeded the private sector average by nearly 7 percent. However, competition for workers has intensified as other industries have hiked starting pay and offered working conditions that are not possible in construction, such as flexible hours or work from home.

Since January 2021 the industry has added 163,000 employees despite the decline last month. But the number of unemployed jobseekers among former construction workers shrank by 229,000 over that time, indicating workers are leaving the workforce altogether or taking jobs in other sectors, Simonson added.

Construction employment totaled 7,523,000 last month, which was 101,000 jobs or 1.3 percent less than in pre-pandemic peak month of February 2020. However, the totals mask large differences between residential and nonresidential segments of the industry, Simonson said.

Nonresidential construction firms--general building contractors, specialty trade contractors, and heavy and civil engineering construction firms--lost 9,000 employees in January. Nonresidential employment remains 213,000 below the pre-pandemic peak set in February 2020. In contrast, employment in residential construction--comprising homebuilding and remodeling firms--edged

up by 4,400 jobs in January and topped the February 2020 level by 112,000.

Association officials said the Construction Hiring and Business Outlook [survey](#) that it released in January showed most contractors expect to add employees in 2022 but overwhelmingly find it difficult to find qualified workers. The association will shortly post an updated *Construction Inflation Alert* to inform owners, officials, and others about the challenges the industry is experiencing with employment, materials costs, and delays.

“Construction firms are struggling to find workers to hire even as they are being forced to cope with rising materials prices and ongoing supply chain disruptions,” said Stephen E. Sandherr, the association’s chief executive officer. “But instead of addressing those challenges, the Biden administration is adding to these problems with a [new executive order](#) that will inflate the cost of construction, discriminate against most workers and undermine the collective bargaining process.”

MATERIALS PRICES SOAR 20 PERCENT BETWEEN JANUARY 2021 AND JANUARY 2022; CONTRACTORS' BID PRICES ACCELERATE BUT CONTINUE TO LAG COST INCREASES

Construction Association Releases New Inflation Alert to Inform Owners, Officials of Cost, Supply, and Labor Challenges; Urges Federal Officials to Take Additional Steps to Ease Supply Chain Disruptions

Prices of construction materials jumped more than 20 percent from January 2021 to January 2022, according to an [analysis](#) by the Associated General Contractors of America of government data released today. The association recently posted a new [edition](#) of its *Construction Inflation Alert*, a report to inform project owners, officials, and others about the challenges volatile materials costs, supply chain disruptions, and labor shortages posed for construction firms.

“Unfortunately, there has been no letup early this year in the extreme cost runup that contractors endured in 2021,” said Ken Simonson, the association’s chief economist. “They are apparently passing on more of those costs but will have a continuing challenge in getting timely deliveries and finding enough workers.”

The producer price index for inputs to new nonresidential construction--the prices charged by goods producers and service providers such as distributors and transportation firms--increased by 2.6 percent from December to January and 20.3 percent over the past 12 months. In compari-

(Continued on page 11)



**Count on Specialty Products & Insulation
to deliver reliable product performance,
exceptional customer service and absolute
best value**

Serving Commercial, Industrial, Marine and OEM Markets

SPI - A global leader in the distribution and specialty fabrication of insulation products for Thermal, Acoustic, Fire Protection and Refractory applications.

From the first contact to project completion, you'll benefit from our extensive product offering, superior service and value.



Experience The SPI Advantage



SPI - Specialty Products & Insulation
C/O Dunes Point Capital
411 Theodore Fremd Ave., Suite 125
Rye, NY 10580
Phone: 855-519-4044
www.spi-co.com

COST EFFECTIVE REPRESENTATION

for Your Business

- OSHA
- Workers' Comp Defense
- Labor & Employment Law
- Construction Law



Gary W. Auman

**Auman
Mahan + Furry**
ATTORNEYS

www.amfdayton.com • (937) 223-6003

(Continued from page 9)

son, the index for new nonresidential construction—a measure of what contractors say they would charge to erect five types of nonresidential buildings—climbed by 3.8 percent for the month and 16.5 percent from a year earlier.

A wide range of inputs contributed to the more than 20 percent jump in the cost index, Simonson noted. The price index for steel mill products soared 112.7 percent over 12 months despite declining 1.6 percent in January. The index for plastic construction products climbed 1.8 percent for the month and 35.0 percent over 12 months. The index for diesel fuel jumped 5.1 percent in January and 56.5 percent for the year. The index for aluminum mill shapes jumped 5.6 percent in January and 32.7 percent over 12 months, while the index for copper and brass mill shapes rose 4.1 percent in January and 24.8 percent over the year. Architectural coatings such as paint had an unusually large price gain of 9.0 percent in January and 24.3 percent over 12 months. The index for lumber and plywood leaped 15.4 percent for the month and 21.1 percent year-over-year. Other inputs with double-digit increases for the past 12 months include roofing asphalt products, 19.8 percent; insulation, 19.2 percent; trucking, 18.3 percent; and construction machinery and equipment, 11.4 percent.

(Continued on page 13)

FUTURE MICA MEETING DATES

65th Annual Spring Convention — June 19 — 22, 2022, Hyatt Regency Coconut Point Resort, Bonita Springs, FL.

Fall 2022 Annual Fall Business Meeting — October 13 & 14, 2022, Omaha Marriott Downtown, Omaha, NE.

2023 Winter Meetings — TBD

66th Annual Spring Convention — June 19 — 22, 2023, Cheyenne Mountain Resort, Colorado Springs, CO.

Fall 2023 Annual Fall Business Meeting — October 2023, TBD, Omaha, NE.

68th Annual Spring Convention — June 16 — 19, 2025, Hyatt Regency Coconut Point Resort, Bonita Springs, FL.

MICA MEMBER ADDRESS/INFO. UPDATES

Be sure to inform the MICA office of any changes or corrections to your listing for either the MICA Directory, e-mail correspondence or mailing address. **Even if you update your company listing on the MICA website, please inform the MICA office of the changes.** We try to be as current as possible with your help.



NDT Seals, Inc.

Zac Sebren
Director

PO Box 52878 Houston, TX 77052-2878 USA
tel 713.222.7584 cell 281.995.7916 fax 713.222.9404
zac@ndtseals.com

Manufacturer of NDT Inspection Plugs and NDT Inspection Point Labels



NDTSeals.com

ISO 9001:2015 Certified Quality Management System

Thermal Energy Products INC.

Reusable Thermal and Acoustical Insulation Covers



A Better Tomorrow Through
Conservation Today

Thermal Energy Products is a Fabricator specializing in the Engineering, Design, Fabrication, and Installation of Removable/Reusable Insulation Systems since 1986.

North Dakota Office

2702 7th Ave South
Fargo, ND 58103

Phone (701) 237-0071

Fax (701) 232-0400

California Office

2362 Railroad St.
Corona, CA 92880

Sales@tepinc.com

www.tepinc.com



Advanced Textiles for
Energy Conservation & Safety

Integrated Marketing Group

High temperature solutions for refinery, power, nuclear, military, marine, OEM, heat protection, aerospace and automotive applications.

High Temperature Textiles

Woven Fiberglass Fabrics

Silicone

PTFE

Vermiculite & Acrylic Coatings

Laminates

Silica

Needle Punched Mats

Accessories

Knitted Wire Mesh

Woven Fiberglass Tapes

Tie Wire

Custom Fabricated

Welding Blankets

Welding Gloves

Welding Curtains

VALUE ENGINEERED PRODUCTS



NEW SEISMIC SHIELD®



- Most sizes ship in 2 - 3 days
- Rounded safety corners
- Seismic grip tabs that are centered for easy alignment
- Friction fit to the strut or fasten to the clevis hanger

Value Engineered Products | Denver, Colorado
303-715-9990 | sales@valueng.com | www.valueng.com

Integrated Marketing Group
528 W. Briardale Ave.
Orange, CA 92865
714.771.2401

www.integratedmarketing-group.com

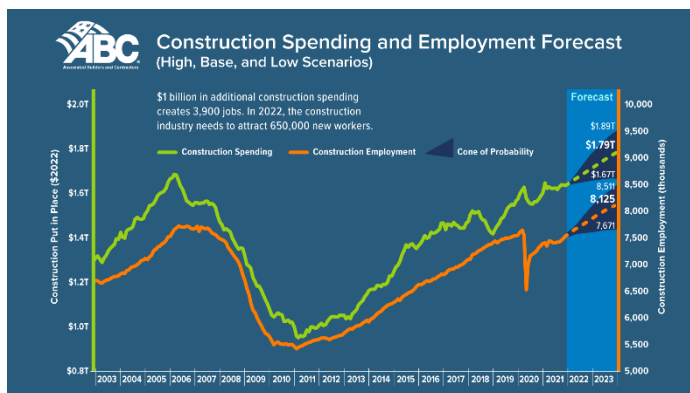
(Continued from page 11)

Association officials said construction firms are being squeezed by increased costs for materials and labor shortages. They urged federal officials to take additional steps to address supply chain disruptions and rising materials prices. These include continuing to remove costly tariffs on key construction components.

“Spiking materials prices are making it challenging for most firms to profit from any increases in demand for new construction projects,” said Stephen E. Sandherr, the association’s chief executive officer. “Left unabated, these price increases will undermine the economic case for many development projects and limit the positive impacts of the new infrastructure bill.”

ABC: CONSTRUCTION INDUSTRY FACES WORKFORCE SHORTAGE OF 650,000 IN 2022

WASHINGTON, Feb. 23—The construction industry will need to attract nearly 650,000 additional workers on top of the normal pace of hiring in 2022 to meet the demand for labor, according to a model developed by Associated Builders and Contractors.



“ABC’s 2022 workforce shortage analysis sends a message loud and clear: The construction industry desperately needs qualified, skilled craft professionals to build America,” said Michael Bellaman, ABC president and CEO. “The Infrastructure Investment and Jobs Act passed in November and stimulus from COVID-19 relief will pump billions in new spending into our nation’s most critical infrastructure, and qualified craft professionals are essential to efficiently modernize roads, bridges, energy production and other projects across the country. More regulations and less worker freedom make it harder to fill these jobs.”

ABC’s proprietary model uses the historical relationship between inflation-adjusted construction spending growth,

sourced from the U.S. Census Bureau’s Value of Construction Put in Place survey, and payroll construction employment, sourced from the U.S. Bureau of Labor Statistics, to convert anticipated increases in construction outlays into demand for construction labor at a rate of approximately 3,900 new jobs per billion dollars of additional construction spending. This increased demand is added to the current level of above-average job openings. Projected industry retirements, shifts to other industries and other forms of anticipated separation are also factored into the model.

Based on historical Census Bureau Job-to-Job flow data, an estimated 1.2 million construction workers will leave their jobs to work in other industries in 2022. It is expected that this will be offset by an anticipated 1.3 million workers who will leave other industries to work in construction.

“The workforce shortage is the most acute challenge facing the construction industry despite sluggish spending growth,” said ABC Chief Economist Anirban Basu. “After accounting for inflation, construction spending has likely fallen over the past 12 months. As outlays from the infrastructure bill increase, construction spending will expand, exacerbating the chasm between supply and demand for labor.

“An added concern is the decline in the number of construction workers ages 25-54, which fell 8% over the past decade. Meanwhile, the share of older workers exiting the workforce soared,” said Basu. “According to the Centers for Disease Control and Prevention, the industry’s average age of retirement is 61, and more than 1 in 5 construction workers are currently older than 55.

“The scarcity of qualified skilled workers is an even more pressing issue,” said Basu. “Since 2011, the number of entry-level construction laborers has increased 72.8%, while the number of total construction workers is up just 24.7%. For reference, the number of electricians was up 23.9% over that span while the number of carpenters actually declined 7.5%. The number of construction managers has increased by just 2.1%. More than 40% of construction workforce growth over the past decade is comprised of low-skilled construction laborers, who represent just 19% of the workforce.

“The roughly 650,000 workers needed must quickly acquire specialized skills,” said Basu. “With many industries outside of construction also competing for increasingly scarce labor, the industry must take drastic steps to ensure future workforce demands are met.”

(Continued on page 17)

Serving the Midwest with Commercial & Industrial Insulation Since 1986



**4-STATE
SUPPLY**

Commercial & Industrial Insulation

4-State Supply has earned the reputation as the distributor of choice for mechanical and architectural insulation, green insulation products, and fire stopping and safety materials. We value our clients - offering responsive service, in-depth product knowledge and fast, reliable delivery. Let our team support your team. Service available from three locations.

.....

Lenexa, KS

913-894-9484
14305 W 105th St.
Lenexa, KS 66215

Omaha, NE

402-359-1095
6101 N. 16th St.
Omaha, NE 68110

Wichita, KS

316-337-5293
3833 N Bridgeport Circle
Wichita, KS 67219



Visit our website at www.4statesupply.com
For more information, contact us at info@4statesupply.com



Extol Insulated Supports

FABRICATING EXCELLENCE

- Designed for use in the industrial and commercial insulation industry
- Easy to specify, order and install
- Available for all types of piping systems
- Meet or exceed industry standards
- From the typical support system to the most complex applications, our products fit and perform



SETTING THE STANDARD THROUGH CUSTOMIZATION

When it comes to engineering a quality product, one size does not fit all. Extol Insulated Supports are designed based on information that is unique to your application, and are fabricated to your specifications.

SHAPING THE INDUSTRIAL INSULATION MARKET FOR OVER 35 YEARS

208 Republic Street, Norwalk, OH 44857
 ExtolOhio.com • info@extolohio.com
 800-486-9865 • 419-668-2072 • Fax: 419-663-1992



By your side
 from day one
 to day done



Technical Insulation
 Building Insulation
 Building Envelope
 Civil Work
 Coatings & Pipeline
 MRO

APi Distribution & ASDCO Construction Supply are now



Arden Hills, MN | Duluth, MN | Shakopee, MN | Billings, MT
 Bismarck, ND | Watford City, ND | Rapid City, SD | Spooner, WI

sales@tenetsolutions.us | 651-604-2836
 www.tenetsolutions.com



BUILDING SERVICE INDUSTRIAL SUPPLY, INC.

Since 1953



Now featuring full gasketing capabilities with our new Flow Water Jet CNC machine. Insulation cut to exact specifications for OEM, mechanical, and many other applications.

We ship anywhere!

Call for a quote today, 414-453-5551!



INDUSTRIAL AND COMMERCIAL INSULATION PRODUCTS

MILWAUKEE, WI (414)-453-5551 MADISON, WI (608) 226-9424 KAUKAUNA, WI (920) 766-3330 WAUSAU, WI (715) 359-2058

BSIS is a subsidiary of Acoustech Supply, Inc.
 1710 South 106th Street, Milwaukee, WI 53214 | acoustechsupply.com





Thank you for **40 years of partnership.**

Since 1980, Proto Corporation has been working hard to earn the trust of our customers, manufacture the highest quality products and deliver the industry's best service. Thank you for your continued support.

(800) 875-7768 | ProtoCorporation.com



Since 1983, Cook Brothers Insulation has set the standard in custom fabricating rigid insulation in shapes and sizes for all kinds of pipes, fittings, valves, vessels and specialty heads. Our dedication to top quality products, customer service, fast lead times, and competitive pricing have earned our reputation as the best in the industry.

Call or email us today for all of your insulation needs.

STYROFOAM™
TRYMER®
FOAMGLAS®
PHENOLIC

Email: sales@cookbro.com
Toll Free: 800-624-3043
Fax: 816-842-4031
www.cookbro.com

*We carry all the
accessories you
need to get the
job done.*



(Continued from page 13)

In 2023, the industry will need to bring in nearly 590,000 new workers on top of normal hiring to meet industry demand, and that's presuming that construction spending growth slows next year.

"Now is the time to consider a career in construction," said Bellaman. "The vocation offers competitive wages and many opportunities to both begin and advance in an industry that builds the places where we work, play, worship, learn and heal. ABC member contractors use flexible, competency-based and market-driven education methodologies to build a construction workforce that is safe, skilled and productive. This all-of-the-above approach to workforce development has produced a network of ABC chapters and affiliates across the country that offer more than 800 apprenticeship, craft, safety and management education programs—including more than 300 registered apprenticeship programs across 20 different occupations—to build the people who build America."

CONSTRUCTION COALITION OPPOSES BIDEN ADMINISTRATION PROJECT LABOR AGREEMENT SCHEMES

WASHINGTON, Feb. 16—On Feb. 15, Associated Builders and Contractors and 15 associations and organizations representing tens of thousands of companies and millions of employees in the construction industry sent a letter to the White House highlighting concerns with President Joe Biden's efforts to require controversial government-mandated project labor agreements on federal and federally assisted construction contracts.

"We applaud the administration's leadership to improve and build new roads, bridges, schools, affordable housing and communications, water, energy and transportation systems in urgent need of public and private investment in order to keep America competitive in a global economy," the coalition wrote. "However, Executive Order 14063, which requires PLAs on federal construction contracts exceeding \$35 million, and other policies encouraging PLAs on federally assisted projects via grant programs administered by federal agencies for state and local gov-

(Continued on page 19)

PERFORMANCE MEETS AESTHETICS

SPIN-GLAS® ULTRA WITH A POLYPROPYLENE-COATED FACING



800 Series Spin-Glas® Ultra Now with Matching Tape

Designed aesthetically to match Micro-Lok® HP Ultra so materials may be used in the same vicinity without a visible discrepancy in appearance, 800 Series Spin-Glas® Ultra with polypropylene-coated ASJ facing offers several benefits including:

- Easy to wipe down
- Water and wrinkle resistant
- Meets NFPA 90A and 90B requirements and 25/50 rating per ASTM E84
- Type II Vapor Retarder with a perm rating of 0.02 per ASTM C1136
- **NEW!** Spin-Glas Ultra Scrim Reinforced Tape for exact matching aesthetics



Brauer Supply Co.

**HEATING, COOLING, INSULATION, FASTENERS, AND AIR FILTRATION
WHOLESALE AND DISTRIBUTORS
ESTABLISHED 1881**

Visit our Web Site at www.brauersupply.com

CORPORATE HEADQUARTERS

1218 South Vandeventer Ave.
St. Louis, MO 63110
Phone: (314) 534-7150
Toll-Free: (800) 392-8776
Fax: (314) 534-1816

3320 Brown Station Road
Columbia, MO 65202
(573) 442-1171
(800) 322-3120
Fax: (573) 875-0730

1802 Katherine Street
Joplin, MO 64801
(417) 624-9600
(866) 845-0733
Fax: (417) 624-9602

491 Davis Blvd
Sikeston, MO 63801
(573) 481-0600
(866) 919-0700
Fax: (573) 481-0612

105 Service Street
Swansea, IL 62226
(618) 233-1733
(877) 534-7150
Fax: (618) 233-4426

Insulation Headquarters

1218 South Vandeventer Ave.
St. Louis, MO 63110
Phone: (314) 534-7150
Toll-Free: (800) 392-8776
Fax: (314) 534-6867

1788 US 61 S.
Festus, MO 63028
(636) 931-8600
(877) 931-8600
Fax: (636) 931-8601

74 S. James St
Kansas City, KS 66118
(913) 281-3100
(877) 589-6838
Fax: (913) 281-3103

1475 Taylor Avenue
Springfield, IL 62703
(217) 544-0265
(888) 544-0265
Fax: (217) 544-0715

498 Dubois Valley Dr.
Union, MO 63084
(636) 583-8855
(800) 585-8856
Fax: (636) 583-8266

2652 So. Old Orchard Rd.
Jackson, MO 63755
(573) 243-4877
(800) 367-4889
Fax: (573) 243-9484

1231 Tom Ginnever Ave.
O'Fallon, MO 63366
(636) 978-6700
(800) 284-8838
Fax: (636) 978-6720

3105-A East Elm
Springfield, MO 65802
(417) 862-7117
(866) 284-4032
Fax: (417) 862-7997

(Continued from page 17)

ernments, will undermine taxpayer investment in public works projects financed by the Infrastructure Investments and Jobs Act of 2021 and additional bipartisan legislation passed by Congress and signed into law free from language requiring or encouraging the use of PLAs.

"The administration's flawed rationale justifying pro-PLA policies ignores marketplace realities and broad opposition to government-mandated PLAs within the construction industry," said the coalition. "Hardworking taxpayers are getting less and paying more when PLAs are encouraged or mandated by the government on federal and federally assisted construction projects. In addition, PLA requirements will exacerbate the construction industry's skilled labor shortage of nearly 500,000 workers, reduce competition from experienced contractors and undermine the Biden administration's ability to meet its infrastructure, affordable housing and clean energy agenda without strong participation from businesses and construction workers directly harmed by anti-competitive and costly pro-PLA policies."

DODGE MOMENTUM INDEX FALLS IN JANUARY

HAMILTON, New Jersey – February 8, 2022 — The Dodge Momentum Index declined 7% in January to a four-month low of 152.9 (2000=100), from the revised December reading of 163.7. The Momentum Index, issued by Dodge Construction Network, is a monthly measure of the initial report for nonresidential building projects in planning, which have been shown to lead construction spending for nonresidential buildings by a full

year. In January, commercial planning fell 9%, and institutional planning slipped 1%.

The Dodge Momentum Index had a stellar 2021, rising 23% from 2020 and reaching levels not seen in nearly 14 years. The recent string of declines, however, may be blamed on rising costs, logistical problems and shortages of skilled labor. Still, even as it has decreased, the dollar value of projects in planning remains exceptionally strong, especially for education, warehouse and healthcare projects.

A total of 13 projects with a value of \$100 million or more entered planning in January. The leading institutional projects were a \$400 million hospital in Tahlequah, OK, and the \$320 million Ascension Seton Medical Tower in Austin, TX. The leading commercial projects were the \$300 million first phase of the Willets Point redevelopment in Willets Point, NY, and the \$300 million XNRGY headquarters in Chandler, AZ.

Many of the challenges facing construction in 2022 will be similar to those in 2021, dampening expectations for robust growth. However, the volume of projects in planning provides hope not only for a continuing recovery, but for it to be more evenly dispersed than last year.

DODGE MOMENTUM INDEX

(2000=100, Seasonally Adjusted)

	Jan-22	Dec-21	% Change
Dodge Momentum Index	152.9	163.7	-6.6%
Commercial Building	175.9	194.1	-9.4%
Institutional Building	124.4	126.2	-1.4%

Source: Dodge Construction Network

FyreWrap®

Elite® 1.5
Duct Insulation

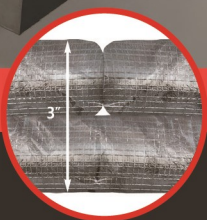
FyreWrap® Has You Covered!

Best in class product, systems and support for grease duct enclosures.

- Easy to install, saves labor
- No bulky overlaps, saves space and material
- Listed systems assures code compliance
- Engineering Judgments provided quickly
- Certified online installation training
- HVAC Duct, Plenum and Dryer Exhaust systems also available
- Made in the USA



Cross section of applied insulation



Unifrax Fire Protection Contacts:

Unifrax is now:

Application Engineering:
716-768-6298

National Sales Manager:
Tony Olszewski: 716-425-8465

Area Manager:
Tim Walter: 281-203-7553

ALKEGEN

alkegen.com



Removable/Reusable Insulation Blankets

- Custom Fit and Fabricated
- Ideal for Turbines, Vessels, Pumps, Valves, Exhausts, Instruments, Expansion Joints, etc.
- Provide Personnel Protection
- 1 Year Payback with Energy Savings
- Welding Cloth & Industrial Fabrics Available
- Over 40 years of Fabricating Experience

Contact Us Today!

320-845-4733 | www.tanidivision.com





MECHANICAL INSULATION
PIPE
BOARD
WRAP



INSULATION
FOR PROCESS
PIPING &
INDUSTRIAL



PVC & METAL
FITTINGS



RUBBER TUBING
& SHEET



TAPES &
ACCESSORIES



MACARTHUR Co.
Building Materials • Employee Owned





INSULATION FABRICATORS

The Right Fit Every Time!

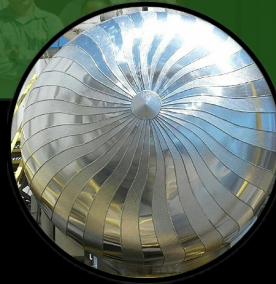
**QUALITY AND EXCELLENCE
ANY PIPING CONFIGURATION**

"THERE IS A PTF SOLUTION
FOR EVERY CONCEIVABLE
INSULATION TASK."

Obed Mendoza

Fabricated Pipe
Extruded Polystyrene
Foamglas®
Isocyanurate
Phenolic

Insulation Supplies
Fittings
Metal Jacket
PVC Jacketing
Rubber & fiberglass



Visit
PTFfabricators.com
for

Products
Samples
Customer Login
Company Info
Contact Us



Quality Fabricated Industrial & Commercial Insulation Products

The Right Fit Every Time!

INSULATION FABRICATORS



2407 Texoma Drive
Denison, Texas 75020

**Obed
Mendoza**

Office: 903.464.0556
Toll Free: 888.464.0556
Fax: 903.464.0558

AccountsManager@ptffabricators.com

www.PTFfabricators.com



Quality Fabricated Industrial & Commercial Insulation Products

The Right Fit Every Time!

INSULATION FABRICATORS

	Trymer 2000	Styrofoam	Fiberglass	Mineral Wool	Foamglas®
K-factor Btu*in/hr*ft²*°F 180 days 75 °F mean	0.19	0.25	0.23	0.25 (@ 100 °F)	0.29
R-value, 1 inch hr*ft²*°F/Btu 180 days 75 °F mean	5.3	4.0	4.3	4.2	3.5

www.PTFfabricators.com

An Energy Conservation Fabricator

IPS

INSPECTION PLUG STRATEGIES, LLC



Designed for use with aerogel
blanket applications



Also fits traditional thicker
insulations



Self-sealing attachment with
smooth & corrugated jacketing



Installs without screws but
accommodates them if needed

**TMLX SILICONE®
INSPECTION PORT**

Patented

We also manufacture:

System II Inspection Ports
System V Inspection Ports
TML Inspection Ports
Labels in various styles
& sizes

*Sealing CUI test sites
couldn't be easier!*



2437 Bay Area Blvd. #147 | Houston, TX 77058
P: 281-480-4406 | 1-800-914-4406 | F: 281-486-4363 | mcb@inspectionplugstrategies.com

www.InspectionPlugStrategies.com

ABC'S CONSTRUCTION BACKLOG SLIPS AGAIN IN JANUARY, CONTRACTOR CONFIDENCE INCHES LOWER

WASHINGTON, Feb. 15—Associated Builders and Contractors reported today that its Construction Backlog Indicator declined to 8.0 months in January, according to an ABC member survey conducted Jan. 20 to Feb. 4. The reading is down 0.2 months from December 2021, but up 0.5 months from January 2021.

Construction Backlog Indicator

	Jan. 2022	Dec. 2021	Jan. 2021	1-Month Net Change	12-Month Net Change
Total	8.0	8.2	7.5	-0.2	0.5
Industry					
Commercial & Institutional	8.2	8.5	7.7	-0.3	0.5
Heavy Industrial	7.6	7.7	6.5	-0.1	1.1
Infrastructure	8.7	7.3	7.0	1.4	1.7
Region					
Middle States	7.4	8.2	5.9	-0.8	1.5
Northeast	7.1	7.5	8.1	-0.4	-1.0
South	9.8	9.0	8.0	0.8	1.8
West	7.4	8.4	8.0	-1.0	-0.6
Company Size					
<\$30 Million	7.4	7.6	6.6	-0.2	0.8
\$30-\$50 Million	7.7	8.7	7.9	-1.0	-0.2
\$50-\$100 Million	12.4	11.3	8.8	1.1	3.6
>\$100 Million	11.9	10.7	12.4	1.2	-0.5

© Associated Builders and Contractors, Construction Backlog Indicator

ABC's Construction Confidence Index readings for sales, profit margins and staffing levels all inched lower in January. All three indices remain above the threshold of 50, indicating expectations of growth over the next six months.

View ABC's [Construction Backlog Indicator](#) and [Construction Confidence Index](#) tables for January 2022.

Construction Confidence Index

Response	January 2022	December 2021	January 2021
CCI Reading			
Sales	66.2	66.3	58.4
Profit Margins	56.9	57.4	47.5
Staffing	63.9	64.6	58.1
Sales Expectations			
Up Big	11.1%	11.5%	8.4%
Up Small	55.3%	53.6%	47.8%
No Change	21.2%	25.1%	19.9%
Down Small	12.5%	8.2%	16.8%
Down Big	0.0%	1.6%	7.1%
Profit Margin Expectations			
Up Big	2.9%	2.7%	2.2%
Up Small	45.7%	45.4%	28.8%
No Change	30.8%	33.3%	34.5%
Down Small	17.3%	15.8%	25.7%
Down Big	3.4%	2.7%	8.8%
Staffing Level Expectations			
Up Big	7.7%	7.7%	3.5%
Up Small	51.9%	53.0%	45.1%
No Change	30.8%	31.1%	35.8%
Down Small	7.7%	6.6%	11.1%
Down Big	1.9%	1.6%	4.4%

© Associated Builders and Contractors, Construction Confidence Index

"Despite the omicron variant, ongoing supply chain issues, elevated energy and materials prices and rampant staffing shortages, the average nonresidential contractor remains upbeat," said ABC Chief Economist Anirban Basu. "Perhaps the most remarkable aspect of the survey findings is the expectation that

(Continued on page 26)

JEFF-CO

SALES AND MARKETING

Since 1988

AEROFOAM®



AVERY DENNISON



Ideal Products



NOSWEAT™
Reusable Valve Wraps



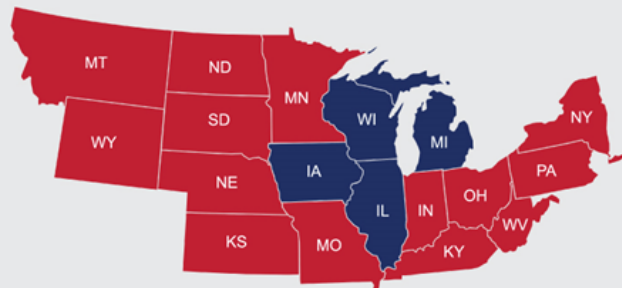
SUPER MAT

Vimasco Corporation



Chad Rebholz

317-459-4030 | crebholz@jeff-co.com



Pat Nelson

630-488-9288 | pkcpremiersales@gmail.com

Polyguard®

Innovation based. Employee owned. Expect more.

Providing Moisture Control Solutions for over 60 Years

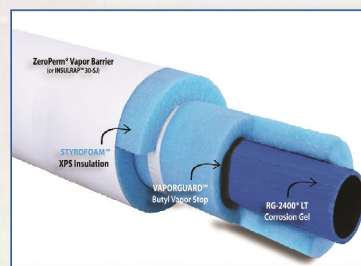
Long known for its weatherproof cladding and vapor barriers, Polyguard now offers superior insulation systems (including protection from CUI) targeting below ambient and chilled water applications and a complete line of pipe supports and tools from Buckaroos.



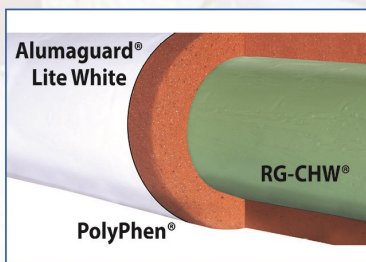
Alumaguard®



RG-2400®



Styrofoam XPS



PolyPhen®



Insulrap/ZeroPerm®



Pipe Supports

- Weatherproof Jacketing • CUI protection
- Vapor Barriers • Insulation • Pipe Supports

The DOW logo is a registered trademark and STYROFOAM is a trademark of The Dow Chemical Company ("Dow") or an affiliated company of Dow

Polyguard®
Innovation based. Employee owned. Expect more.

214-515-5000

www.polyguard.com/mechanical



BUCKAROOS®
Innovation based. Employee owned. Expect more.
A Polyguard Company

800-969-3113

www.buckaroos.com

Buckaroos is now a Polyguard Company

SURE II SHOT

Hand-Held Technology times "TWO"

2x Tough * 2x Fast * 2x Portable



SureShotII changes your concept of pin welding...times TWO. Be it Cupheads, Weld Pins, or even Weld Studs -- SureShotII can deliver. With updated Hybrid Technology and Dual Operating Power, SureShotII uses the best of all worlds to provide Capacitor Discharge fastener welding second to none. In the lightweight and rugged packaging you've come to expect from SureShot (weighing in at 18 lbs.) this Welder has the power to weld virtually any Stud fastener known to the CD application market: with only 110volt (or 220volt incoming power). User-friendly, the system offers multi-level safety and operational designs to get the job done quickly, safely and reliably --- truly delivering the power of "II".

Width: 13.7" (347mm)

**Your
SINGLE SOURCE
Insulation Fastening
StudWelding
Specialists**

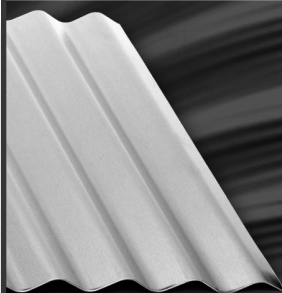
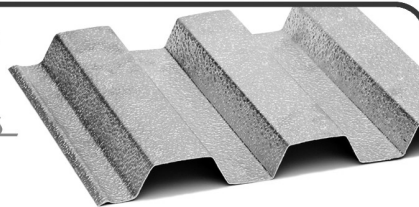
1-800-852-8352 • 450 Richard Street • Miamisburg, Ohio 45342 • midwestfasteners.com



www.RPRHouston.com

Metal Jacketing Specialists

RPR Products, Inc.



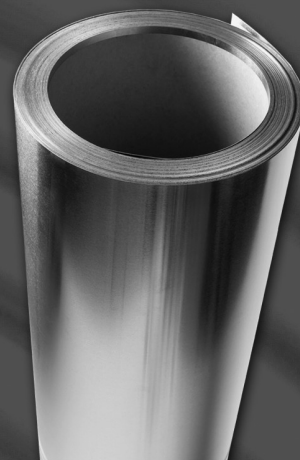
INSUL-MATE® Products

- Roll Jacketing & Sheeting
- 2-Piece aluminum & T316 Stainless Steel Pressed Elbows
- Strapping, Seals, Springs and Screws
- 4 Inch Box Rib Sheets
- Insul-Box® Aluminum Siding
- 7.2" Rib Siding



ACOUSTI-MATE®

- Acoustical Jacketing
- Aluminum and Stainless Steel Perforated Rolls and Sheeting



407 DELZ | HOUSTON TEXAS 77018 | 713.697.7003 | 800.231.0149



(Continued from page 23)

industry profit margins will expand during coming months, implying that contractors expect to pass along enough price increases to project owners to countervail the rising costs of construction service delivery.

"The last two months have indicated declining backlog, but the dips are not cause for particular concern," said Basu. "Declining backlog indicates that some projects are postponed or canceled in response to rising costs and/or extended delivery timelines. The principal challenge for contractors remains a lack of sufficiently skilled labor, a structural issue that will not go away soon and a circumstance contractors have dealt with for years. The situation is likely to deteriorate further as federal infrastructure dollars begin affecting the economy more forcefully in the near future."

SENATE DEMOCRATS' PROPOSAL TO SUSPEND THE FEDERAL GAS TAX WILL NOT LOWER PRICES BUT WILL MAKE IT HARDER TO FIX ROADS AND BRIDGES

Construction Official Says "Irresponsible" Proposal Won't Address Root Causes of Higher Fuel Prices, But Will Blow a Huge Hole in the Federal Highway Trust Fund and Undermine Efforts to Fix Infrastructure

The chief executive officer of the Associated General Contractors of America, Stephen E. Sandherr, issued the following statement today in response to the introduction of a bill by several Democratic Senators to suspend the federal gas tax for the

remainder of 2022 in response to rising fuel prices:

"A recently introduced proposal to suspend the federal gas tax will likely have no impact on what motorists pay at the pump, but it will certainly make it harder for President Biden to keep his promise to fix roads and bridges that are in desperate need of improvement across the country. That is because the irresponsible measure, if enacted, would leave a massive hole in the federal Highway Trust Fund, which is largely funded by the gas tax, that pays for federal investments in road, bridge and transit improvement projects.

"Fuel prices are rising for a variety of reasons, including the fact demand is up while Democrats in Congress and the White House are pushing measures to limit domestic oil production. Those factors have led to significant increases in the price of fuel, and will not go away even if the federal fuel tax were to be temporarily waived.

"Instead of helping motorists, this ill-conceived proposal will make the cost of shipping and commuting higher as growing congestion and worsening road conditions delay shipments, damage vehicles and undermine economic growth since there will be fewer funds available in the long-term to repair our transportation systems. Ultimately, all taxpayers will be forced, via new taxes or additional deficit spending, to pay for this proposal to plug the massive revenue holes it will create.

"We hope this proposal goes nowhere but we take nothing for granted. That is why we will take every possible step to educate members of Congress about why this proposal must not pass."



Sometimes the
best amenities
are the ones
you don't see

For nearly 30 years, our fire-rated enclosure systems have been providing peace of mind, while quietly protecting our customers' lives and investments. From our DryerWrap™ products - extensively used throughout multi-family housing ductwork - to our FastWrap™ XL products - ideal for commercial kitchen exhaust and ventilation ducts - more people trust the FireMaster™ family of products to hold the line.

FastWrap™ XL



- Fire rated up to 2192°F (1200°C)
- 1 to 2-hour UL rated for kitchen exhaust ducts
- Won't age, become brittle, or shrink
- Zero clearance to combustibles
- Meets ASTM E84 smoke/flame rating
- FastDoor™ XL panel provides liquid-tight grease duct access for easy maintenance

DryerWrap™



- UL and ULC listed for 1-hour protection inside rated wood frame construction
- Flexible, 1/2-inch thick optimizes installation costs and space
- Tested on 30 gauge, 7-inch round and 26 gauge 10- x 4-inch rectangular duct
- Improved safety with applications specific testing

North America

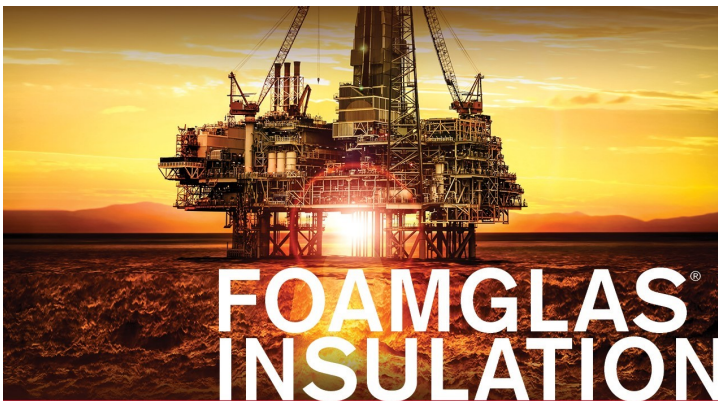
Morgan Advanced Materials
Thermal Ceramics Inc
2102 Old Savannah Road, Augusta, Georgia 30906. USA
t: +1 (706) 796 4200
marketing.tc@morganplc.com

www.morganthermalceramics.com

FIREMASTER™



MIDWEST INSULATION CONTRACTORS ASSOCIATION
16712 ELM CIRCLE
OMAHA, NEBRASKA 68130
(402) 342-3463
e-mail: mica@micainsulation.org
www.micainsulation.org



For more information contact:
Rob English | 314-983-9778
Rob.English@owenscorning.com
Jubal Trujillo | 724-994-6699
Jubal.Trujillo@owenscorning.com

**AN EXCELLENT CHOICE
FOR COMMERCIAL AND
INDUSTRIAL APPLICATIONS**

